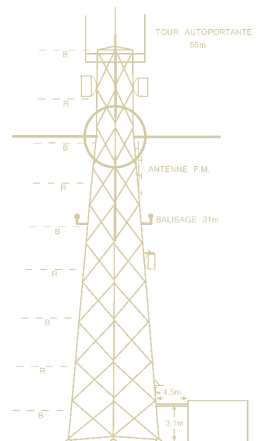


Veillez noter que la formation Pathloss 4 se donne en anglais seulement. Le cursus du cours est donc présenté en anglais aux pages subséquentes.

Si vous désirez obtenir une version française, s.v.p. bien vouloir communiquer avec nous.

Nous vous remercions de votre intérêt.



**Yves R. Hamel
et Associés Inc.**

**424, rue Guy
bureau 102
Montréal (Qc)
Canada H3J 1S6**

téléphone :

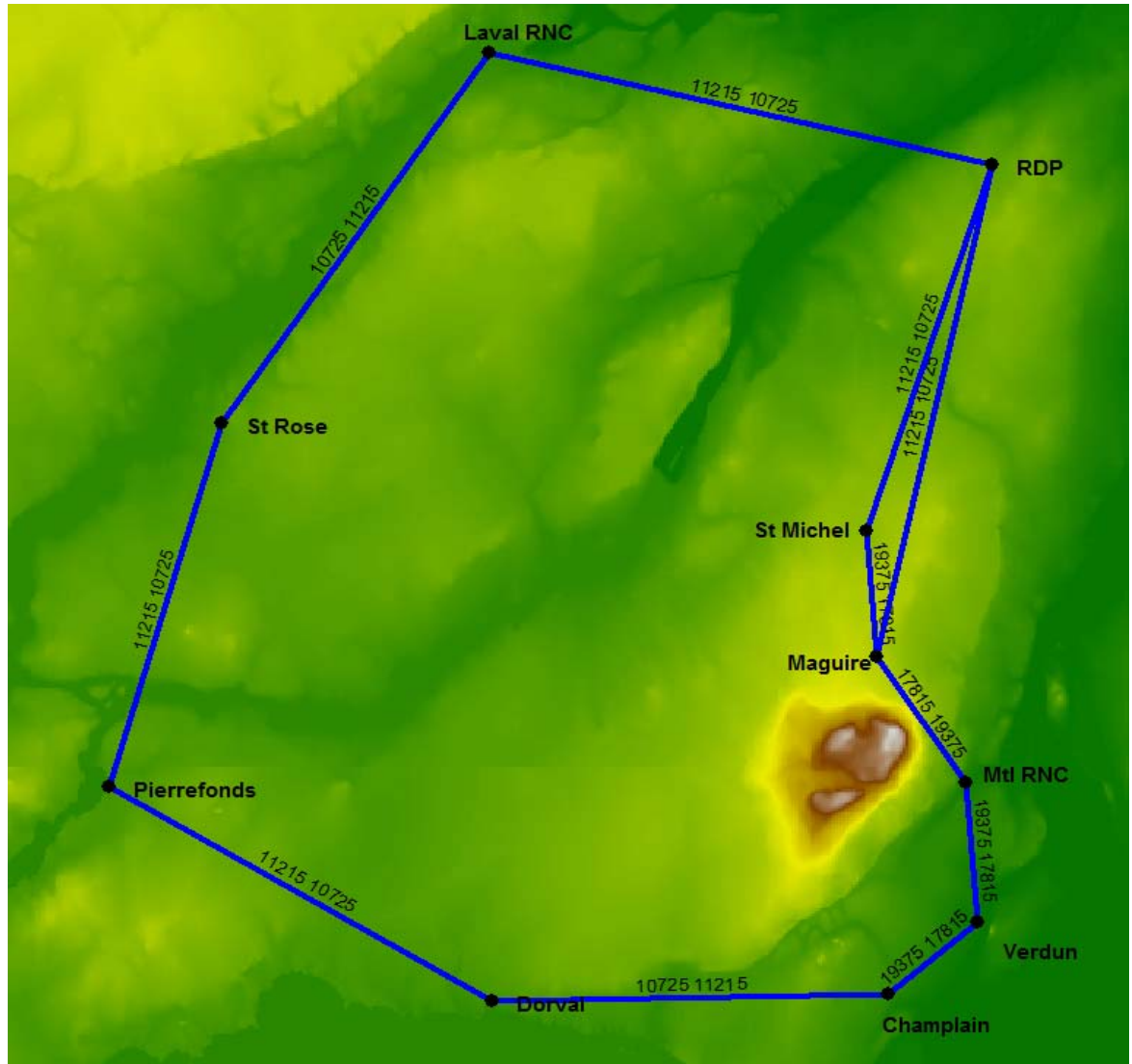
514 934 3024

télec. :

514 934 2245

web : www.YRH.com
courriel : Telecom@YRH.com

Pathloss 4 Training



POINT-TO-POINT COMPLETE SOFTWARE OPERATION (PL4)

3 Day Training

**FOR MORE
INFORMATION**

Yves R. Hamel et Associés Inc.
102-424 Guy Street
Montreal (QC) Canada
H3J 1S6

Tel.: 514-934-3024
Fax: (514) 934-2245
Email: telecom@yrh.com



PATHLOSS

Microwave communication network design can be a complex and sometimes daunting task. Fortunately, engineers and technicians working on MW network planning can use software tools such as Pathloss to ensure a methodical and thorough approach to their task.

The Pathloss program is a state-of-the-art comprehensive path design tool for radio links operating in the frequency range from 30 MHz to 100 GHz.

Designed for use throughout the world with diverse equipment and wide-ranging atmospheric conditions, Pathloss uses a variety of terrain databases, equipment files and local weather files.

The program is organized into modules, covering all aspects of microwave communication network design. These include eight path design modules, an area signal coverage module and a network module, which integrates the radio paths and area coverage analysis

OBJECTIVES

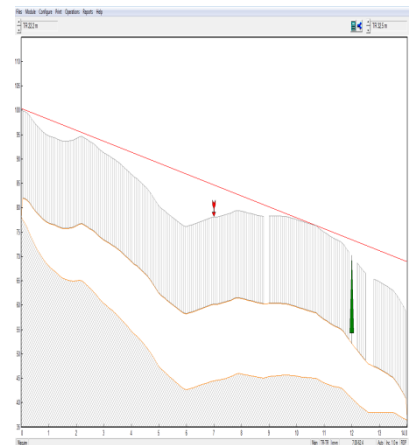
Our training session has a two-fold objective: First, it aims at creating a solid background of knowledge in the field of microwave theory and second, it builds on that knowledge with the specifics of microwave design using the Pathloss software.

Microwave theory covers topics such as the basics of microwave communications systems, propagation, RF design methods and procedures.

Software operation section of the training covers a variety of topics, ranging from software installation and upgrade to a module-by-module study of the software operation.

TARGET AUDIENCE

Although Pathloss is a comprehensive step-by-step design tool, YRH Pathloss training is specifically targeted to microwave engineers and experienced microwave technicians having some basic notions of microwave propagation.



PRE-REQUISITES

Basic knowledge of microwave communication networks required.

ADDITIONAL PATHLOSS 5 TRAINING PACKAGES

- ☞ Pathloss 5 - 4 days: Microwave theory and complete Point-to-Point (PTP) software operation (PL5-01)
- ☞ Pathloss 5 - 3 days: Complete Point-to-Point (PTP) software operation (PL5-02)
- ☞ Pathloss 5 - 2 days: For experienced Pathloss 4 users (PL5-03)
- ☞ Pathloss 5 - 3 days: Coverage and Point-to-Multipoint (PTMP) software operation (PL5-04)
- ☞ Pathloss 5 - 5 days: Full Pathloss 5 operation including microwave theory, PTP, PTMP and coverage applications (PL5-05)

SCHEDULE AND FEES

For more information about our Pathloss training program, please e-mail us at telecom@YRH.com or call at +1 514.934.3024.

COURSE CONTENTS

DAY 1

- **Overview of microwave communications theory**
 - + Systems and components
 - + Propagation
 - + Reliability calculations and objectives
 - + Step-by-step overview of MW design process
 - + Software installation and maintenance updates
 - + Overview of software files

- **Software operation (Part 1)**
 - + Summary Module
 - + Network Module

DAY 2

- **Software Operation (Part 2)**
 - + Exercises Network Module
 - + Terrain Data Module
 - + Antenna Height Module

Exercise:

 - *Antenna Height Module*

- **Software Operation (Part 3)**
 - + Diffraction Loss
 - + Exercises Diffraction Loss
 - + Multipath Module
 - + Reflections Module

Exercise:

 - *Reflections Module*

DAY 3

- **Software Operation (Part 4)**
 - + Worksheet Module
 - Exercise:
 - *Worksheet Module*

- **Software Operation (Part 5)**
 - + Interference Module
 - + Print options

- **Question period and review of modules of particular interest**

- **Overview for additional possibilities**
 - + Coverage
 - + Rapid deployment